

KODAGRAPHS



2015.49.1



2015.49.2

OFFICES OF THE ROCKLAND HARBOUR
BOARD, QUAY ST. WEST, AUCKLAND.



2015.49.3

"THE FERRIES" BUILDING AND FERRY
STEAMERS AT BERTHS.



1 R.

2 R.



3
LOWER QUEEN ST. BUILDINGS FROM NEARER
END ARE ENDER'S BLDG., CENTRAL POST
OFFICE; WATERLEY HOTEL; DILWORTH BLDG.



4
QUAY ST. EAST FACING MAIN WHARVES.
LOCAL OFFICES OF PRINCIPAL SHIPPING
COYS. ARE HOUSED IN THESE BUILDINGS.



3 a.

SS "PARRACOMBE" DISCHARGING JARRAH
FROM BUNBURY, N.Z., AT CENTRAL WHARF
JULY 1928.



4 a.

MY "BRYNJE" DISCHARGING HARDWOOD
FROM BUNBURY, N.Z., AT KING'S WHARF.
12/4/28.



SS "KATOA" DISCHARGING GENERAL
CARGO FROM SOUTH ISLAND, N.Z., AT
PRINCE'S WHARF.



SS "KATOA" AS ABOVE, USING SEVEN CRANES
AT FOUR SHIPS' GEARS; ELEVEN GANCS, RATE
OF DISCHARGE 275 TONS PER HOUR, APPROX.



5A.

2015.64.11

JARRAH SLEEPERS FOR N.Z. RAILWAYS
DISCHARGED INTO RAILWAY WAGGONS.
M.V. "BRYNJE" JULY 1928.



6A.

2015.64.12

A LINK WITH FORMER DAYS. FINNISH
BARQUE "OLIVEBANK" AT KING'S WHARF.
DEC. 1928.



7

SS "KATOA" SEVEN QUAYSIDE - ONE ROOF
CRANE, TOP OF PRINCE'S WHF.

2015.64.13

8

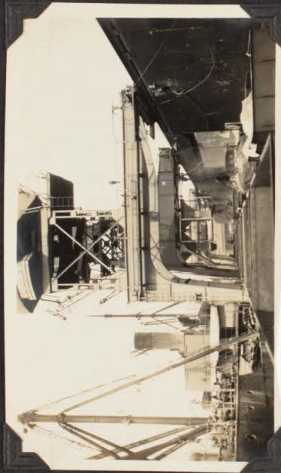
"KATOA" CARGO, TOP FLOOR SHED 23
PRINCE'S WHF.



7A.

2015.69.14

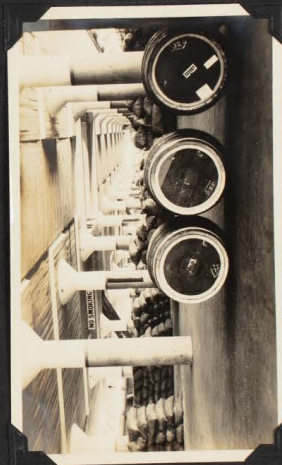
"OLIVEBANK" DISCHARGING GUANO FROM THE SEYCHELLES, EMPLOYING FOUR CRANES AND GRABS. NOTE EMPTY GRAB OVER FORWARD HOLD.



8A.

2015.69.15

"SS. KAIAPOI" DISCHARGING GUANO FROM WALPOLE ISLAND. GRABS AND CRANES USED. RATE OF DISCHARGE 40-50 TON PER GRAB PER HOUR. JAN. 1928.



2015.69.16

"KATOR" CARGO, LOWER FLOOR SHED 23. SHED 320' X 80'. LOAD: TOP FLOOR 3 1/2 CWT PER 900 FEET; LOWER FLOOR 5 CWT PER FOOT.



2015.69.17

"NEWS PRINT", TOP FLOOR SHED 15, QUEEN'S WHARF. EACH REEL ABOUT 14 CWT, FLOOR LOAD 3 1/2 CWT PER FOOT.



Q R.

2015.60.15

MOTOR VESSEL "KARAMER" ON MAIDEN VOYAGE, READY TO SAIL FOR LONDON. CENTRAL WHARF. DECEMBER 1928.



10 A.

"KARAMER" LOADING CHEESE AT CENTRAL WHARF



61 B4 5102

"M.V. BRAND" DISCHARGING BULK SULPHUR FROM GALVESTON, U.S.A., AT CENTRAL WHARF. RATE OF DISCHARGE, 40-50 TONS PER GRAB PER HOUR.



61 B4 5102

S.S. "PERSIAN PRINCE" DISCHARGING BULK ROCK PHOSPHATE FROM NAURU ISLAND AT KING'S WHARF. RATE OF DISCHARGE 30-40 TONS PER GRAB PER HOUR.

NOTE. CRANES ONLY, USED BY ABOVE VESSELS



11 A.

2015.69.21

"KARRARA" LOADING DUMPS OF WOOL.



12 A.

2015.69.22

N.Z. HEMP SPINNING SHIPMENT BY S.S.
"DEVON" SHED II, CENTRAL WHARF, NOV. 1928.



2015.69.23

13
S.S. "WAIMEA" COALING FROM HULK ALONG-
SIDE, BY MEANS OF CRANE & GRAB.



2015.69.24

14
S.S. "KATANGATA" DISCHARGING COAL INTO
HULK BY MEANS OF CRANE & GRAB WORK-
ING INTO BIN, TRACK & TRAMLINE.
AVERAGE 50 TONS PER HOUR APPROX.



13 R.

2015.69.25

S.S. DEVON LADING SKIM MILK POWDER FROM MOTOR LORRIES CENTRAL WHARF. NOV. 1928.



14 R.

2015.69.26

S.S. DEVON LADING BUTTER FROM RAILWAY WAGGONS CENTRAL WHARF. NOV. 1928.



2015.69.27

S.S. "KAITANGATA" DISCHARGING BY MEANS OF SMALL CRAB ON SHIP'S DECK TRIPPING INTO TRUCK ON TRAMLINE LAID OVER HULK, TRUCK HAS HINGED BOTTOM WHICH DROPS AT END OF LINE



2015.69.28

NZ. COYT. S.S. "HINEMOA" BUILT IN 1876 FOR LIGHTHOUSE GENERAL HARBOUR WORK. AT PRESENT EMPLOYED IN THE NICE & NORFOLK ISLAND TRADE.



15 A.

2015.69.29

PORTION OF LARGE SHIPMENT OF WOOL "DUMPED"
READY FOR SHIPMENT. QUEEN'S WHARF. MARCH 1928.



16 A.

2015.69.30

SS "MIDDLESEX" LOADING ABOVE HOOL AND OTHER
CARGO. MARCH 1928.



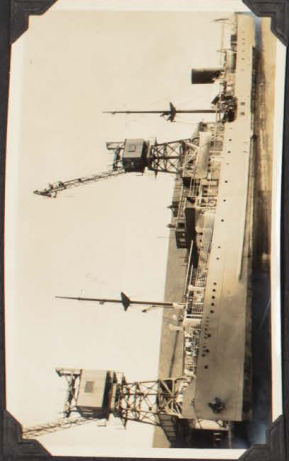
17
TONGAN GOV. AUX. KETCH "HIFOFUA"
BUILT IN AUCKLAND FOR DISPATCH
DUTY BETWEEN THE ISLANDS OF THE
GROUP

2015.69.31



18 18
RMS. "REMUEVA" LEAVING QUEEN'S WHARF
FOR LONDON. PASSENGERS & CARGO OF BUTTER,
CHEESE, WOOL ETC.

2015.69.32



17A.

2015.69.34

N.Z. GOVT. MOTOR VESSEL "MAUI POMARE"
BUILT FOR THE NORFOLK ISLAND AND
NIUE ISLAND TRADE.
CENTRAL WHF. 1928.



18A.

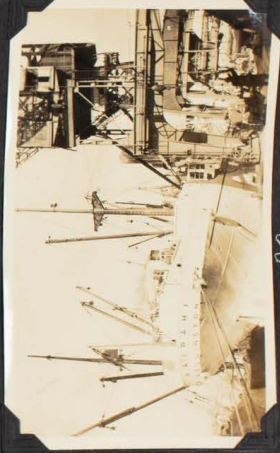
2015.69.34

COMMONWEALTH AND DOMINION LINERS
"PORT KELLINGTON" AND "PORT CURTIS"
LOADING AT PRINCES WHARF FOR THE
UNITED KINGDOM
DEC. 1928.



2015.69.35

SS "WAIPAHI" DISCHARGING CARGO OF
ORANGES ETC AT KING'S WHARF. FRUIT FROM
EASTERN PACIFIC (COOK & SOCIETY ISLANDS)



2015.69.36

SS "WAIPAHI" AS ABOVE STERN VIEW.
20.



TSS "MAHENO" GEARED TURBINE STEAMER
ENGAGED IN THE TRADE BETWEEN NEW
ZEALAND & AUSTRALIA.

2015.69.37



LARGE SINGLE SHIPMENT OF CEYLON TEA
"MAHENO" 15,000 CHESTS.

2015.69.38



23
INTERIOR OF SHED, CENTRAL WHARF,
N.Z. MOTOR OLYMPIA, JULY 1937.

2015.69.39



24
SHED 12 AS ABOVE. SHED 8 ALSO
USED FOR TRUCKS ETC. EACH SHED
320' X 60'

2015.69.40

23 R.



S.S. MIDDLESEX DISCHARGING OVER 7,000 TONS OF LONDON CARGO AT PRINCES WHARF, FEB. 1928.

2015.69.41

24 R.



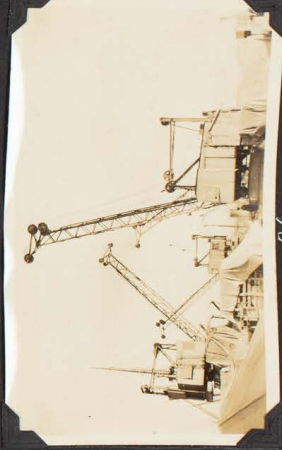
S.S. "KIA ORA" DEPARTING FOR LONDON WITH A FULL LOAD OF PRODUCE NOV. 1927.

2015.69.42



S.S. "CAMBRIDGE" DISCHARGING GENERAL CARGO FROM WEST COAST PORTS OF GREAT BRITAIN, AT PRINCES WHARF.

2015.69.43



S.S. CAMBRIDGE. QUAYSIDE CRANES PLACING HEAVY PACKAGES ON ROOFS OF SHEDS WHERE THEY ARE STACKED BY ROOF CRANES.

2015.69.44

27



SS "TOFUR" EMPLOYED IN WESTERN PACIFIC TRADE. (FINI 4 SAMOA ISLANDS) LEAVING QUEEN'S WHARF.

2015. 69. 45

28



REPAIRS WHILE YOU WAIT, REPLACING PROPELLAR BLADE LOST AT SEA. SS "CANADIAN SEICNEUR" PRINCES WHARF.

2015. 69. 46

29



A BUSY MORNING AT SHED 24, PRINCE'S WHARF.

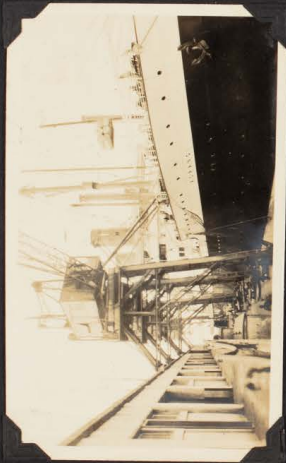
2015.69.47

30



INTERIOR OF SHED 24 PRINCE'S WHARF.
PARTION OF LONDON CARCOX SS. "PAKEHA"

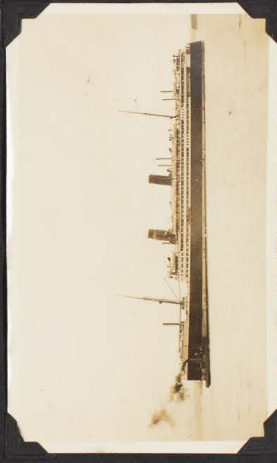
2015.69.48



30 R.

2015-69-49

31.



R.M.V. "AORANGI" LEAVING PRINCE'S WHARF FOR VANCOUVER.

2015-69-50

32.



S.S. "TAMARCA" LATE "SOPHOCLES" AT PRINCE'S WHARF.

2015-69-51

33



MOTOR AMBULANCE, MAINTAINED AND OPERATED BY ST. JOHN AMB. BRIGADE FOR FIRST AID WORK ON WATERFRONT.

2015.69.52

34



PART OF LARGE SHIPMENT OF MOTOR CARS FROM NEW YORK.

2015.69.53

33 R.



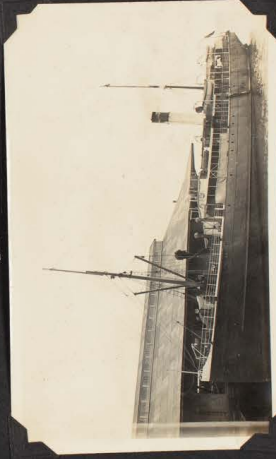
LARGE DEISEIL ENGINED SCHOONERS
OF THE NORTHERN S.S. COY. WHICH ARE
RAPIDLY SUPPLANTING STEAMERS IN
THE PROVINCIAL COASTAL TRADE.
CENTRAL WHARF. MAY 1928.

34 R.



SS. MATANGI LATE MOLUALLYN EMPLOYED
BY THE NORTHERN S.S. COY. IN THE TRURHAGA
TRADE.

35



SS. CLANSMAN "BUILT 1884. ONE OF THE OLDER
CLASS OF COASTAL TRADERS

36

SS. "MAKORA" TYPE OF PASSENGER FERRY
USED IN TRANS-HARBOUR WORK

57



SS. WEST ISLIP" FROM PACIFIC COAST, U.S.A.
CARGO OF GENERAL-A-TIMBER; NOTE
HEIGHT OF DECK LOAD

2015.69.57

58



SS. WEST ISLIP" STERN VIEW; DECK
LOAD ALMOST UP TO BOAT DECK.

2015.69.58

39

FLOAT CRANE T.S.S. "MAHUA", LIFTING BUCKETS
FROM DREDGER. MAX. RADIUS 80 TON GEAR 64;
20 TON GEAR 74' 6".

40



CARRICK CRANE, "B" TYPE, MAX. RADIUS
FROM EDGE OF QUAY MAX. LOAD 3 TONS.

2015 69.59

41



BABCOCK-WILCOX SEMI-PORTAL CRANE

2015.69.60

42



BABCOCK-WILCOX PORTAL CRANE. BOTH ABOVE CRANES LIFT UP TO 5 TONS AND HAVE A MAX. OUTRANGE FROM EDGE OF QUAY OF FEET.

2015.69.61

43



CARRICK "A" TYPE CRANE, MAX CAPACITY
5 TONS, OUTHANG

2015. 69. 62

44



STOTHERT & PITT, 5-TON ROOF CRANES,
TRAVERSE FULL WIDTH OF SHED ROOFS.
MAX. RADIUS 3 FEET.

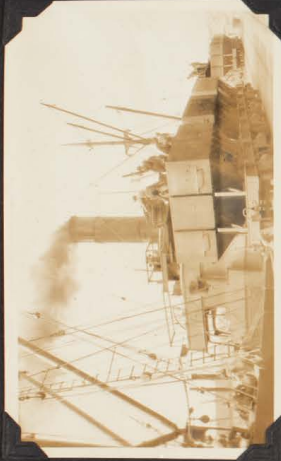
2015. 69. 63

45



STOTHERT & PITT. 57.3 TON QUAYSIDE CRANES.
MAX. OUTHANG FEET.

2015.69.69



45A

2015.69.65

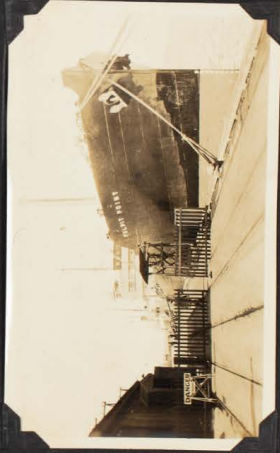
SS. KAITANGATA DISCHARGING COAL AT WESTERN WHARF FOR RUCKLAND GAS CO. BASKETS ARE LANDED ON STAGE AND ARE THEN TIPPED INTO TRUCKS. OLD METHOD. JAN. 1929.



46A

2015.69.66

TWO NEW CRANES ON WESTERN WHARF IN USE FOR THE FIRST TIME SS. KAIRAOI NEW METHOD 24/1/29.



47

2015.69.67

SS. PULPIT POINT, VACUUM OIL COMPANY, DISCHARGING BULK MOTOR SPIRIT AT WESTERN WHARF.



48

2015.69.68

SS. PULPIT POINT DISCHARGING BULK MOTOR SPIRIT THROUGH A 10 INCH LEAD AT A RATE OF OVER 400 TONS PER HOUR.

49



VACUUM OIL COMPANY'S TANK INSTALLATION
AT FREEMAN'S BAY.

2015-69-69

50



SHELL OIL COMPANY'S TANK INSTALLATION
AT FREEMAN'S BAY.

2015-69-70



49 R.

2015.69.71

ATLANTIC UNION OIL COY TANK INSTALLATION AND STORES, BERMONT STREET, FREEMANS BAY, JULY 1928.



51

2015.69.72

SS. PLEIDON, BRITISH IMPERIAL OIL COY. DISCHARGING BULK MOTOR SPIRIT AT WESTERN WHARF, JULY 1924.



52

2015.69.73

BRITISH IMPERIAL OIL COY'S METHOD OF DISCHARGING BY STEAM SUPPLIED TO SHIP'S PUMPS FROM BOILER HOUSE ASHORE. NOTE SMALLER HOSE CARRYING STEAM TO PUMPS. MOTOR SPIRIT DISCHARGED THROUGH 3 INCH LEADS AT 250-300 TONS PER HOUR.



SS. KAIMANAYA DISCHARGING COAL.
S.S. GOLDEN SEA DISCHARGING MOTOR SPIRIT
IN CASES.
S.S. EL CIEVRO DISCHARGING BULK MOTOR
SPIRIT.

WESTERN WHARF. SEPT. 1924
24



ABOVE THREE VESSELS FROM NORTH END OF
WHARF. "EL CIEVRO" (NEAREST CAMERA) HAS
JUST BURST HER PETROL HOSE ON WHARF.

2015. 69. 74

2015. 69. 75

35



SS. PULPIT POINT AND SS. OLEIDON DISCHARGING BULK MOTOR SPIRIT AT WESTERN WHARF THROUGH FLEXIBLE HOSE TO SHORE PIPES. COMBINED RATE OF DISCHARGE ABOUT 600-700 TONS PER HOUR. BOTH COMPANIES' TANKS ARE SITUATED ABOUT 1/4 OF A MILE AWAY AND ARE ONLY A FEW FEET ABOVE SEA LEVEL. SEPT. 1927.

2015 69 76

36



SS. VOCCO PUMPING MOTOR SPIRIT THROUGH A 10 INCH LEAD. RATE OVER 100,000 GALLS. PER HOUR.

2015 69 77



55A.

2015.69.78

MESSRS. WINSTONE LTD'S CASED PETROL AND OIL STORE AT FREEMAN'S BAY ON FIRE 2/11/28. FIRE STARTED ON THE 1. ST. AND BURNED FOR SEVERAL DAYS.



56A.

2015.69.79

SMOKE FROM WINSTONE'S OIL STORE FIRE RISING THOUSANDS OF FEET INTO THE AIR 2/11/28



57

2015.69.80

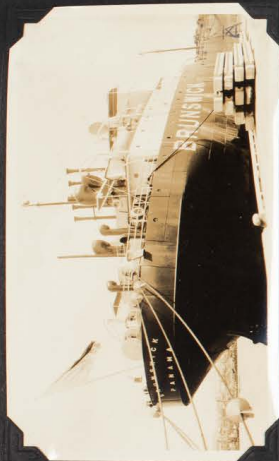
S.S. CEDARBANK DISCHARGING CASED MOTOR SPIRIT AND OILS FROM GALVESTON U.S.A. AT NESTERY WHARF.



58

2015.69.81

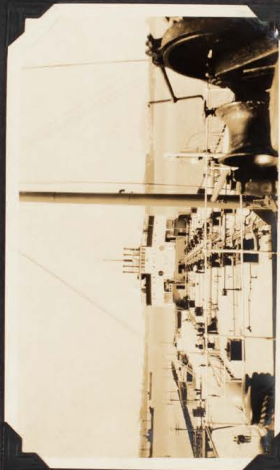
METHOD OF WORKING CASE OIL. TRAYS HOLDING 20-30 CASES ARE LIFTED FROM SHIP AND LANDED ON PLATFORM ALONGSIDE OF WHICH VEHICLE TO BE LOADED IS DRIVEN UP.



57A.

2015-69-82

DEISEL ELECTRIC OIL TANKER "BRUNSWICK"
FIRST ELECTRICALLY PROPELLED MERCHANT VESSEL TO VISIT AUCKLAND.
FEB. 1929.



58A.

2015-69-83

"BRUNSWICK" FROM FORECASTLE HEAD.
NOTE EXHAUST PIPES INSTEAD OF



59

2015-69-84

SS "PHOENIX" SHELL OIL COY. DISCHARGING
THE FIRST CARGO OF FUEL OIL AT WESTERN
WHARF 1916/28.



60

2015-69-85

"MYRANGA" DISCHARGING THE FIRST CARGO
OF BULK MOTOR SPIRIT FOR THE ATLANTIC UNION
OIL COY. AT WESTERN WHARF 3/6/28.
MOTOR SPIRIT PUMPED BY SHIP THROUGH 6 INCH
MAINS TO STORAGE TANKS SITUATED ABOUT 1/4
OF A MILE AWAY ON THE FREEMAN'S BAY
RECLAMATION.

61



SS EAGLEHAWK TYPE OF VEHICULAR
FERRY USED FOR TRANS-HARBOUR WORK.
LOAD 20-100 VEHICLES ACCORDING TO SIZE.

2015.69.86

62



SS SOUTHERN CROSS BUILT FOR MISSIONARY
WORK AMONG THE SOLOMON AND NEW
HEBRIDES ISLANDS WITH HEADQUARTERS
AT AUCKLAND.

2015.69.87

63



SS "ULMAROR", HUDDART PARKER S.S. COY.
SAILING FOR SYDNEY.

2015 69 88

64



CROYD AT QUEEN'S WHARF FAREWELLING
FRIENDS SAILING BY "ULMAROR."

2015 69 89



63 A.

2015.69.90

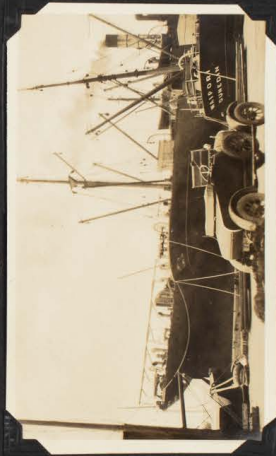
A BUSY CORNER AT THE NORTH WALL.
COAL HULKS, TRAWLERS AND STEAMERS
LAID UP FOR OVERHAUL AND REPAIRS.



64 A.

2015.69.91

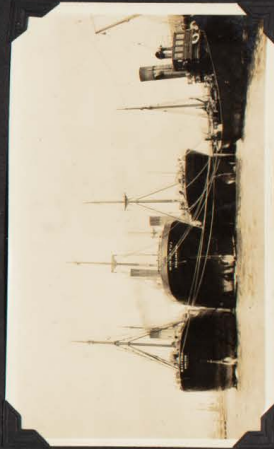
SOME OF BUCKLAND'S TRAWLING FLEET
AT THE NORTH WALL...MAY, 1928.



65

2015.69.92

SEE BELOW.



66

2015.69.93

ABOVE AND BELOW, A SIDE OF THE PORT
WHICH PROVIDES A GOOD DEAL OF
EMPLOYMENT FOR ENGINEERS AND OTHERS.
STEAMERS LAID UP AT NORTH WALL FOR
OVERHAUL AND REPAIRS.

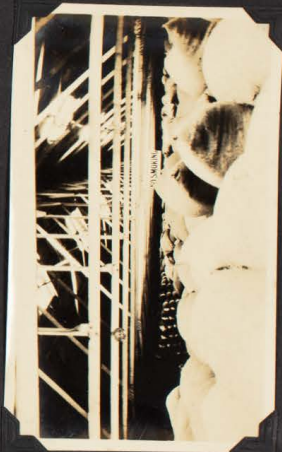
67



S.S. KARTIGI DISCHARGING A FULL CARGO
OF AUSTRALIAN WHEAT AT QUEEN'S
WHARF.

2015.69.94

68



PORTION OF 4,000 TONS OF AUSTRALIAN
WHEAT IN THE TOP FLOOR OF SHED 46,
QUEEN'S WHARF. STACKED 11 AND 12 SACKS
HIGH. FLOOR LOAD 3 1/2 CWT. PER SQUARE
FOOT.

2015.69.95

69



SS. ECHUNGA KING'S WHARF DISCHARGED
5,283 TONS OF NEWCASTLE COAL IN 3 DAYS
8 1/2 HRS. AVERAGE 1,428 TONS PER DAY
FEBRUARY 1923.

2015 69 46

70



DISCHARGING SMALL PACKAGES OF
MERCHANDISE ON WOODEN TRAYS IN ORDER
TO AVOID DAMAGE BY CRUSHING AS WHEN
SLUNG WITH ROPE.

2015 69 97



69 A.

2015.69.98

PART OF 600 TONS OF STEEL SECTIONS ON
ROOF OF SHED 21 PRINCES WHARF FOR
TRANSMISSION TOWERS, IN TRANSIT TO
WAIKOKOPI, HAYNES BAY TO BE USED
FOR CONVEYING CURRENT FROM WAIKAREMORUA
HYDRO-ELECTRIC STATION.



70 A.

2015.69.99

METHOD OF SORTING AND STACKING
CARGO IN THE SHEDS ACCORDING TO
CONSIGNEE'S MARKS.



71

2015.69.100

PART OF LARGE SHIPMENT OF MOTOR
CARS, LUBRICATING OILS, ETC. EX S.S.
"AUSTRALIND, CENTRAL WHARF.



72

2015.69.101

ANOTHER VIEW OF ABOVE SHOWING
ESSEX CARS STACKED 5 HIGH.

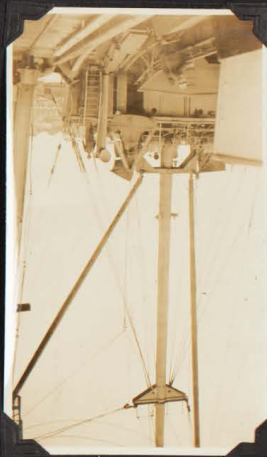
Y3



SS "KALINGO" DISCHARGING NEWCASTLE
COAL BY MEANS OF LARGE GRABS ON
SHIPS GEAR.

2015-69-102

Y4



ANOTHER VIEW OF ABOVE. NOTE GRAB
JUST SWINGING OUT TO TRUCK.

2015-69-103

45



RIDE POLE OVER 80 FEET LONG OF A LARGE
MAORI MEETING HOUSE FROM THE THAMES
DISTRICT BEING TRANSFERRED FROM
QUEEN'S WHARF WHERE IT HAD BEEN
STORED TO THE MEMORIAL MUSEUM.

2015 69 104

46



A FAST DIMINISHING N.Z. ASSET. A
FINE KAURI PINE IN THE WHITAKERE
RANGES. RUCKLAND.

2015 69 105

75 R.

2015.69.101



PASSENGER FERRY STEAMER ROUNDING
END OF QUEEN'S WHARF ON TRIP TO
DEVONPORT 30/11/28.

76 R.

2015.69.102



N.E. GALE OF 30/11/28. LOOKING TOWARDS
SHORL BAY FROM END OF KING'S WHARF.
VEHICULAR FERRY STEAMER IN DISTANCE.

77

2015.69.103



SCOW "MAGGIE" ASHORE ON THE
BREASTYORK EAST SIDE OF KING'S
WHARF. N.E. GALE 30/11/28.

78

2015.69.104



SCOW "EXCELSIOR" RIDING OUT THE
GALE OF 30/11/28. EAST SIDE OF KING'S
WHARF.



77A.

2015.69.110

H.M.S. DIOMEDE LEAVING CENTRAL WHARF FOR ENGLAND TO REFIT FOR RECOMMISSION.



78A.

2015.69.111

THE MARMAR'S FUNNEL, A ONCE WELL KNOWN OBJECT AROUND THE N. Z. COAST 1857/28.



79

2015.69.112

SEE BELOW.



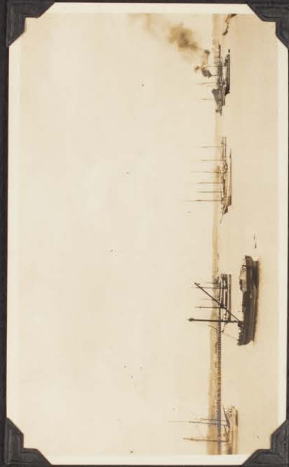
80

2015.69.113

ABOVE AND BELOW OVER 1,000 TONS OF RAILWAY RAILS AND WHALE OIL ON THE ROOF OF SHED 24 PRINCE'S WHARF.

99A.

THIS DREDGE "HARPI" STEERING UP TO ST. MARY'S BOAT HARBOUR TO DEPOSIT HER LOAD ALONGSIDE SUCTION DREDGER WHICH IS RECLAIMING LAND ON WEST SIDE OF WESTERN WHARF. NOTE BOY OF OLD STEERER "WELMSTORD" PROTRUDING FROM MUD IN EXCAVATION. JAN. 1929.

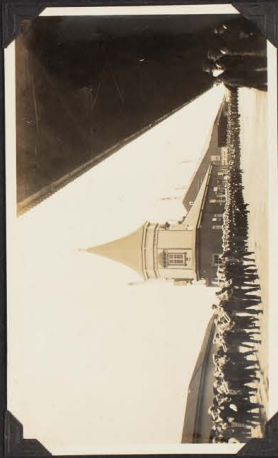


80 A.

2015.69.114

AN IMPORTANT PART OF THE PROVINCIAL COASTAL TRADE. SCOWS AT ANCHOR FREEBANK'S BAY. JAN. 1929.

81.



2015.69.115

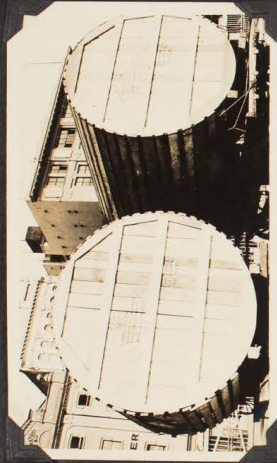
ANZAC DAY 1929. THE NAVAL SECTION OF THE PARADE HEADED BY THE RUCKLAND WATER-SIDE WORKERS' BAND, MOVING UP QUEENS WHARF.

82.



2015.69.116

25 TH APRIL 1929, ANZAC DAY PARADE, THE BAND OF THE 3RD. RUCKLAND REGIMENT LEADING THE PARADE OF RETURNED SOLDIERS.



81A.

2015-69-117

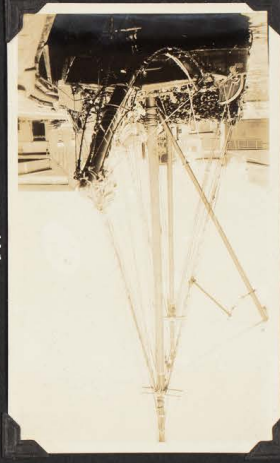
STEEL GLASS LINED CREAM VATS IMPORTED FROM GERMANY FOR BUTTER FACTORY PURPOSES. LARGER ONE WEIGHS ABOUT 5 1/2 TONS AND HOLDS 3,000 GALLS. SMALLER ONE, 4 1/2 TONS HOLDS 2,000 GALLS. JULY 1928.



82A.

2015-69-118

A HANDSOME UNIT OF THE UNION S.S. COYS. FLEET. SS. "MARRAMA" PRINCE'S WARE. JUNE 1928.



83.

2015-69-119

SCOW "ALMA" WITH LOAD OF TI-TREE FIRE-WOOD FOR DISCHARGE AT KING'S WHARF. MARCH. 1928.



84.

2015-69-120

AN IMPORTANT BACKLAND INDUSTRY. LIGHTERS WHICH CARRY THE SUGAR TO THE CITY AND SHIPPING FROM THE COLONIAL SUGARS COYS. REFINERIES AT CHELSEA.

83A



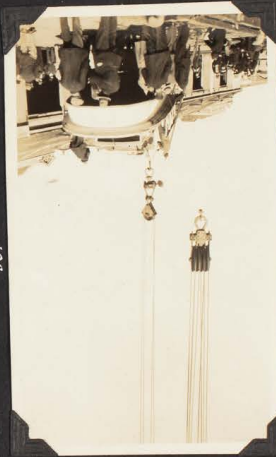
A BOOM FULL OF FINE KAURI LOGS AT THE KAURI TIMBER COY'S MILLS, FREEMAN'S BAY. JAN. 1928.

84A.



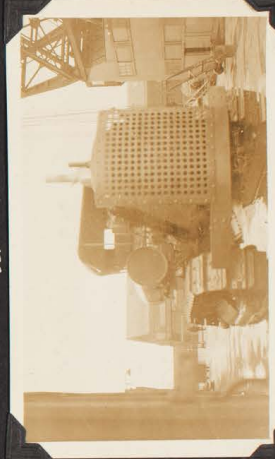
DAIRY HERD GRAZING ON SOME OF THE BEST PASTURE WHICH HELPS TO PRODUCE SUCH A WONDERFUL OUTPUT OF BUTTER FAT. PULLARUPE DISTRICT FEB. 1928.

85.



A.H.B. FLOATING CRANE "MAHUA" LOADING LARGE LAUNCH ONTO ROAD VEHICLE FOR TRANSPORTATION TO MANUKAU HARBOUR, QUAY STREET BREASTNORK, MARCH 1928.

86.



A LARGE PETROL DRIVEN TRACTOR FROM U.S.A. FOR N.Z. STATE FORESTS DEPT. JULY 1928.

2015-69-122

2015-69-123

2015-69-123

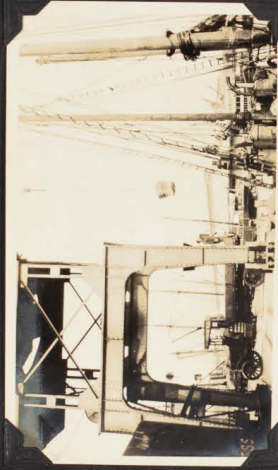
2015-69-124



85A.

2015.69.125

SUCTION DREDGER FILLING IN RECLAMATION
ON WEST SIDE OF THE WESTERN WHARF FEB. 1929.



86A.

2015.69.126

STOW "HARE" DISCHARGING GLASS SAND
FROM PARENGA FOR THE AUSTRALIAN GLASS
COY. PENROSE CRANE AND LARGE BASKET
USED. KING'S WHARF. MARCH 1928.

87.



2015.69.127

H.I.M.S. "IDZUMO" FLAGSHIP OF THE JAPANESE
TRAINING SQUADRON BERTHED AT QUEEN'S
WHARF AND DECORATED FOR A RECEPTION.
JULY 1928.

88.



2015.69.128

H.I.M.S. YAKUMO JAPANESE TRAINING SQUADRON
BERTHED ASTERN OF THE "IDZUMO" QUEEN'S
WHARF. JULY 1928.

89.



TWELVE OARED CUTTER "YAKUMO" RETURNING
FROM A PRACTICE ROW.

2015 69 129

H. Kodagraph
MADE BY
EASTMAN KODAK CO.
FOR EXTRA LEAVES
ODDER SIZE

